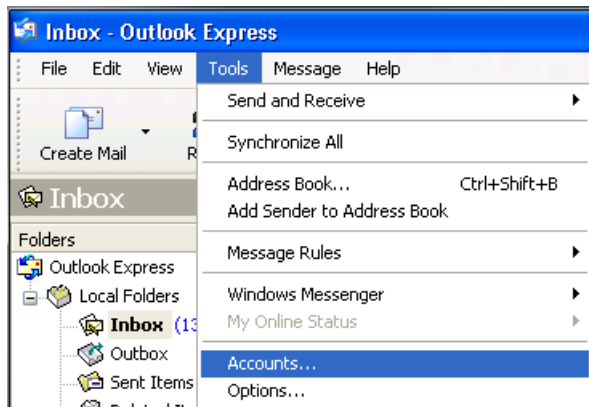
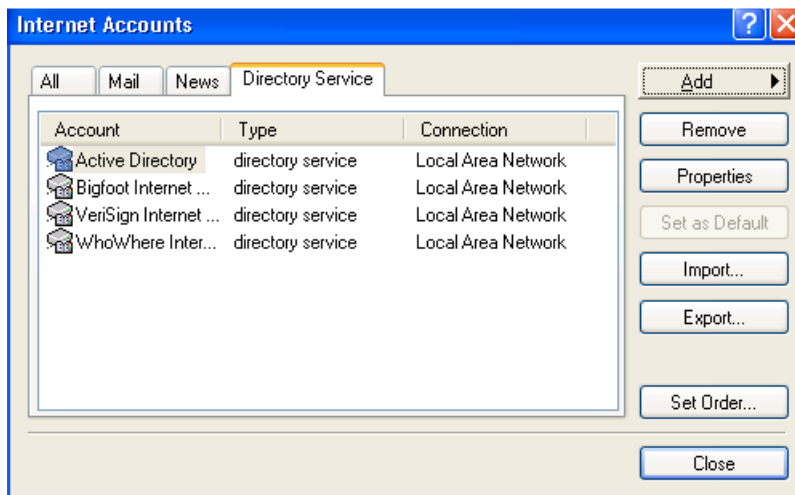


## Configuring Windows Live Mail for Contact Directory (LDAP)

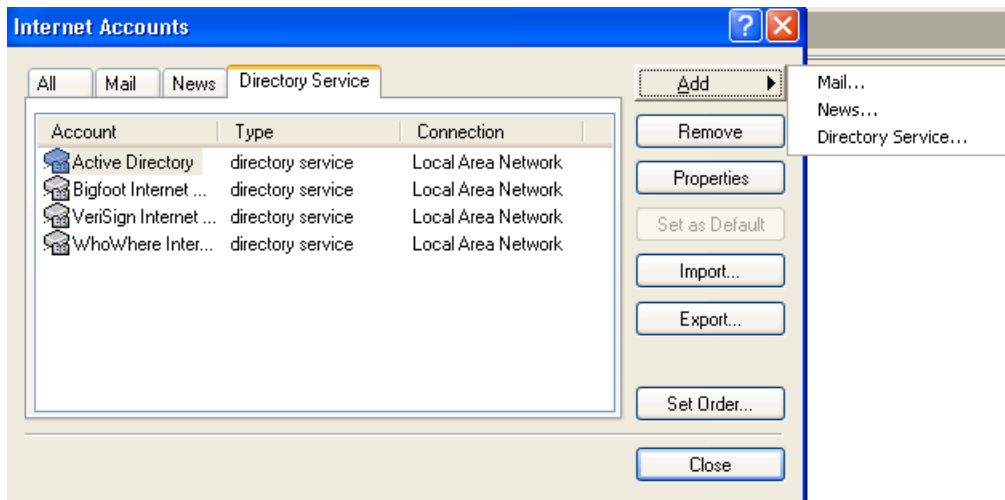
1. Click start on Outlook Express
2. Click Tools and **Options** and select **Accounts**



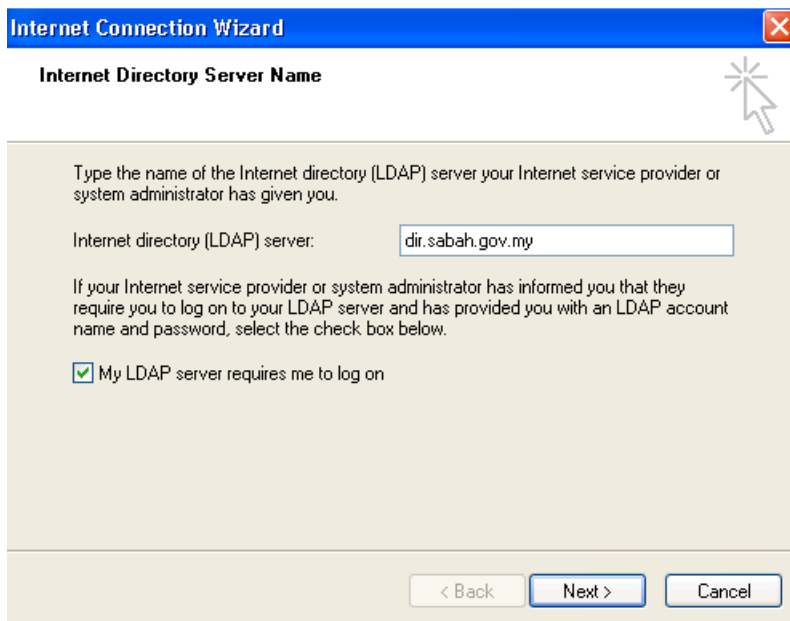
3. On Internet **Accounts** select **Directory Service** tab



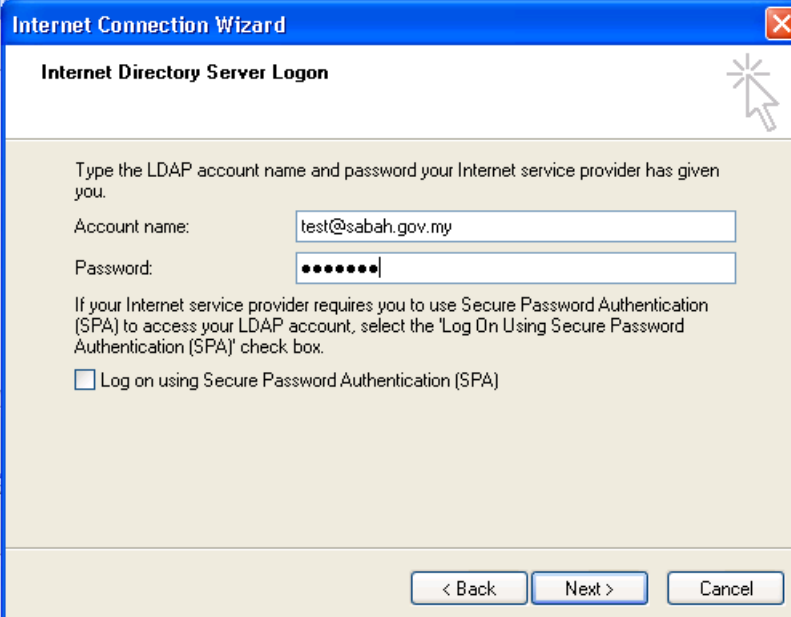
4. Click **add** select **Directory Service**



5. Enter **Internet Directory** field : **dir.sabah.gov.my** and tick **My LDAP server requires me to log on** then **Next**

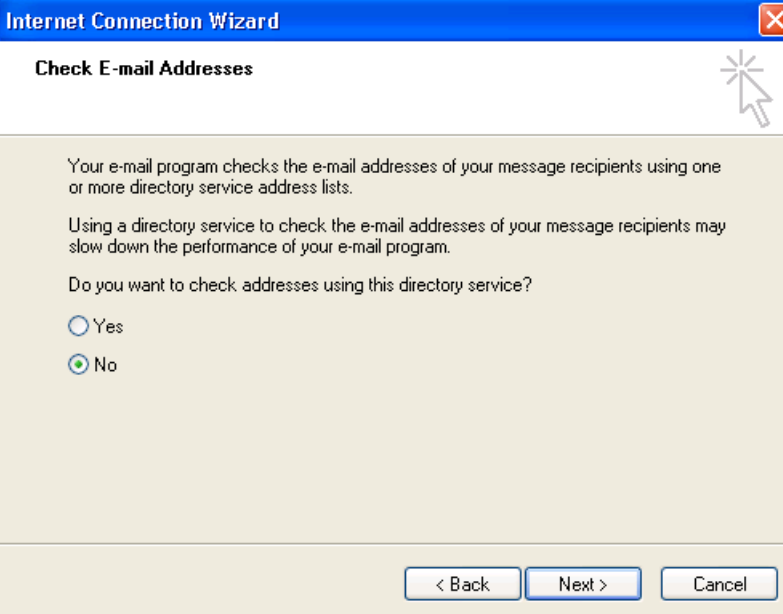


6. In the **Account name:** enter username and password (**Sabah.gov.my username**) and click **Next**



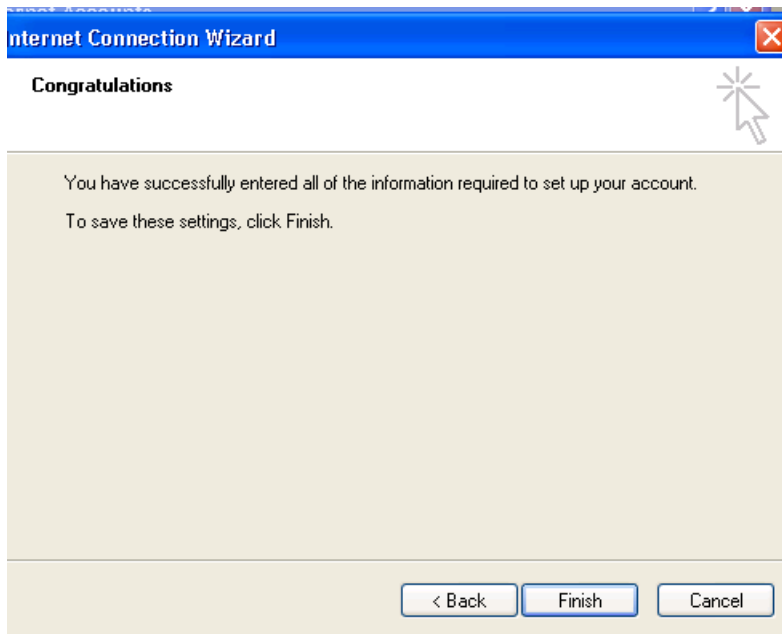
The screenshot shows a window titled "Internet Connection Wizard" with a close button in the top right corner. The main heading is "Internet Directory Server Logon". Below the heading, there is a text box for "Account name:" containing "test@sabah.gov.my" and a password field with masked characters "••••••••". A checkbox labeled "Log on using Secure Password Authentication (SPA)" is present and unchecked. At the bottom, there are three buttons: "< Back", "Next >", and "Cancel".

7. Select **No** for Check E-mail Address then **Next**

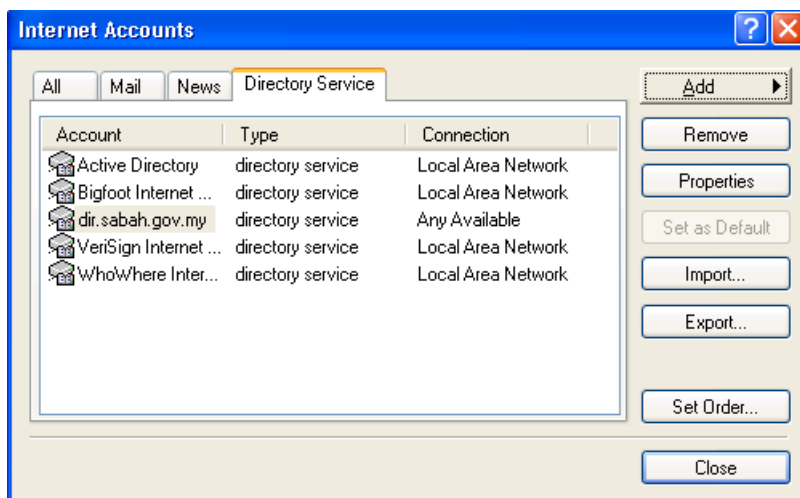


The screenshot shows a window titled "Internet Connection Wizard" with a close button in the top right corner. The main heading is "Check E-mail Addresses". Below the heading, there is explanatory text about e-mail programs checking addresses. A question "Do you want to check addresses using this directory service?" is followed by two radio button options: "Yes" and "No". The "No" option is selected. At the bottom, there are three buttons: "< Back", "Next >", and "Cancel".

## 8. Finish



9. After finish, On **Contact Directory** select **dir.sabah.gov.my** and click **Properties**



10. On dir.sabah.gov.my **Properties** click **Advanced** tab In the Search base field enter :  
**DC=sabah,DC=gov,DC=my** and apply

