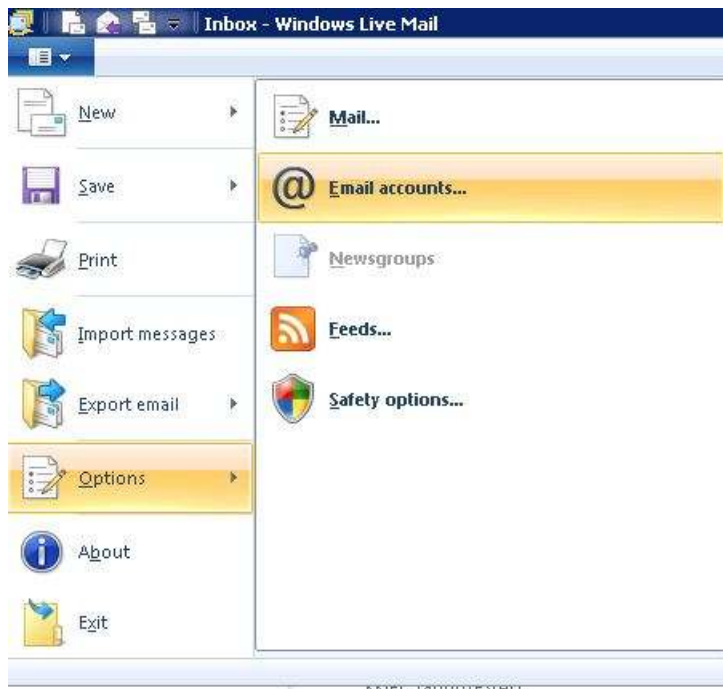
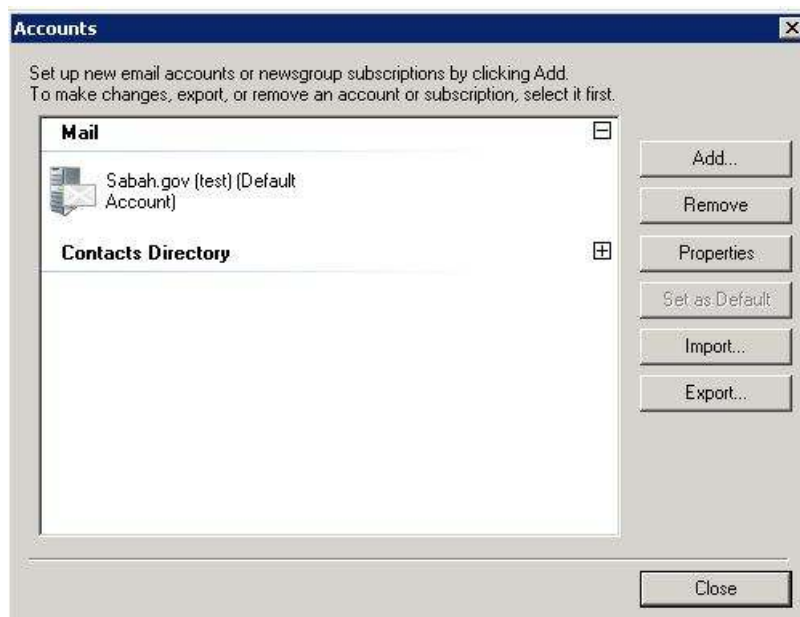


Configuring Windows Live Mail for Contact Directory (LDAP)

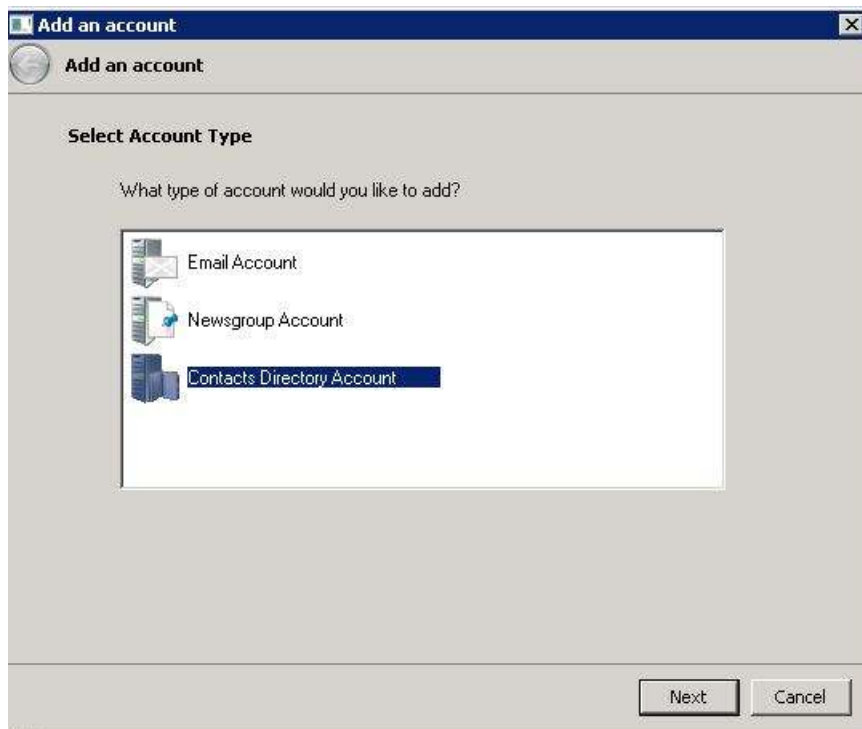
1. Start **Windows Live Mail**
2. Click left pane Windows Live and go to **Options** and **Email accounts**



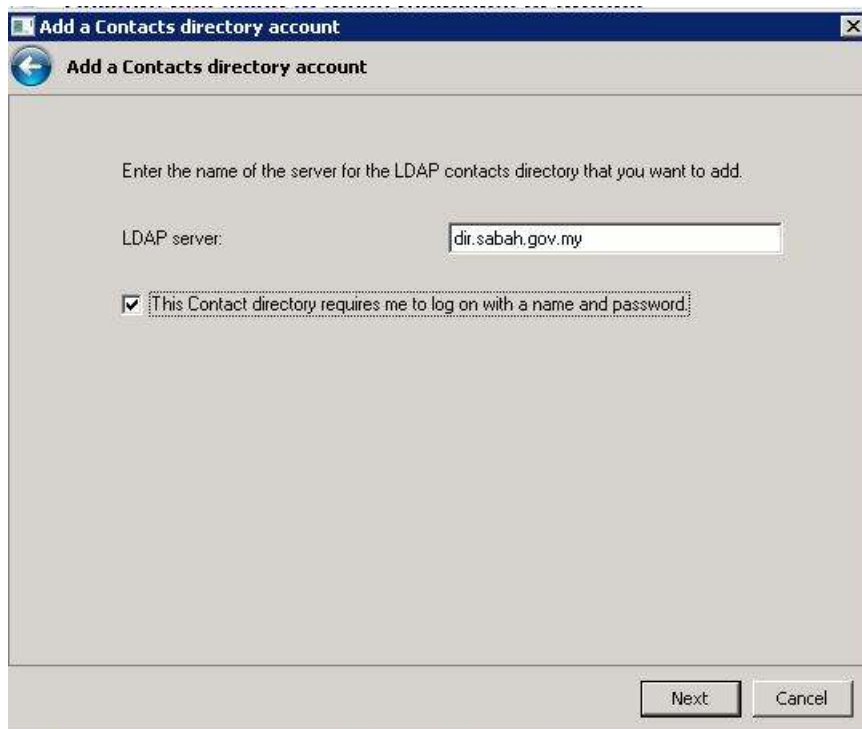
3. Click **Add**



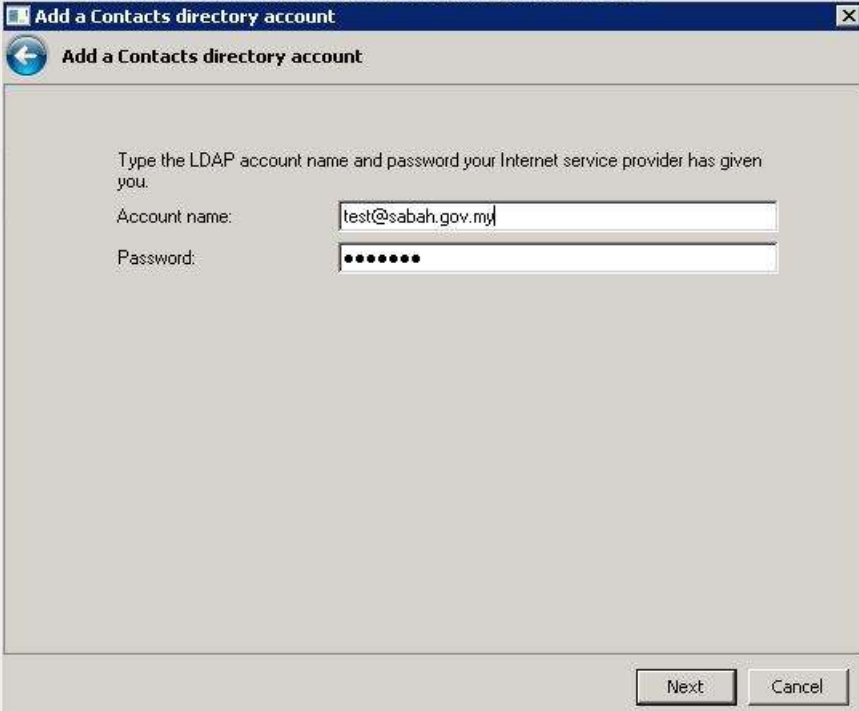
4. Select **Contact Directory Account** and click **Next**



5. In the **LDAP Server:** field, enter **dir.sabah.gov.my** , tick **This Contact directory requires me to log on with a name and password** and click **Next**.



6. In the **Account name**: enter username and password (Sabah.gov.my username) and click **next**



HOWARD BEE TONG TO PASS EXAMINER'S REVIEW

Add a Contacts directory account

← Add a Contacts directory account

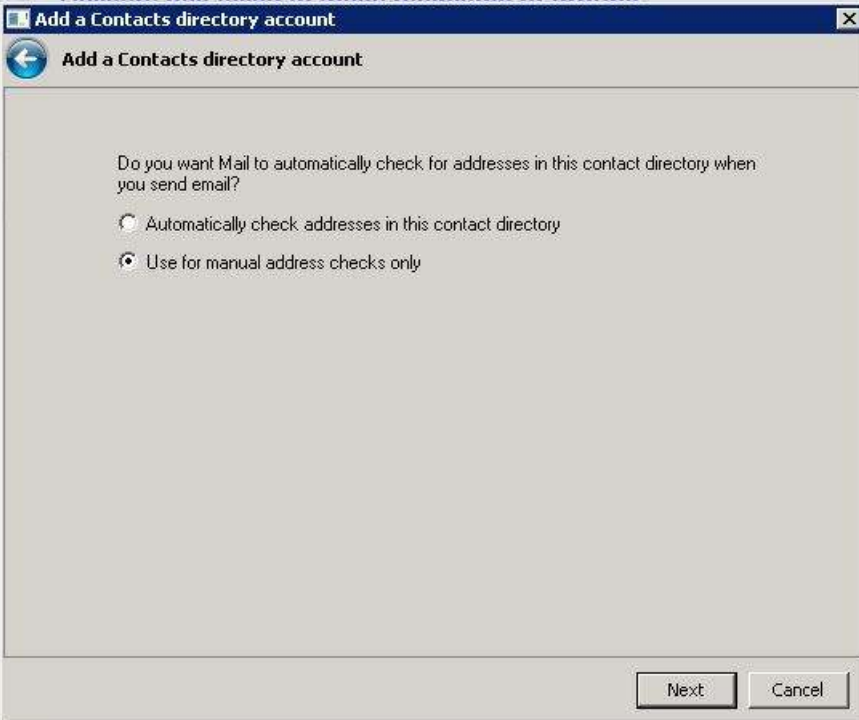
Type the LDAP account name and password your Internet service provider has given you.

Account name: test@sabah.gov.my

Password: ●●●●●●●

Next Cancel

7. Select **Use for manual address checks only** and Next



HOWARD BEE TONG TO PASS EXAMINER'S REVIEW

Add a Contacts directory account

← Add a Contacts directory account

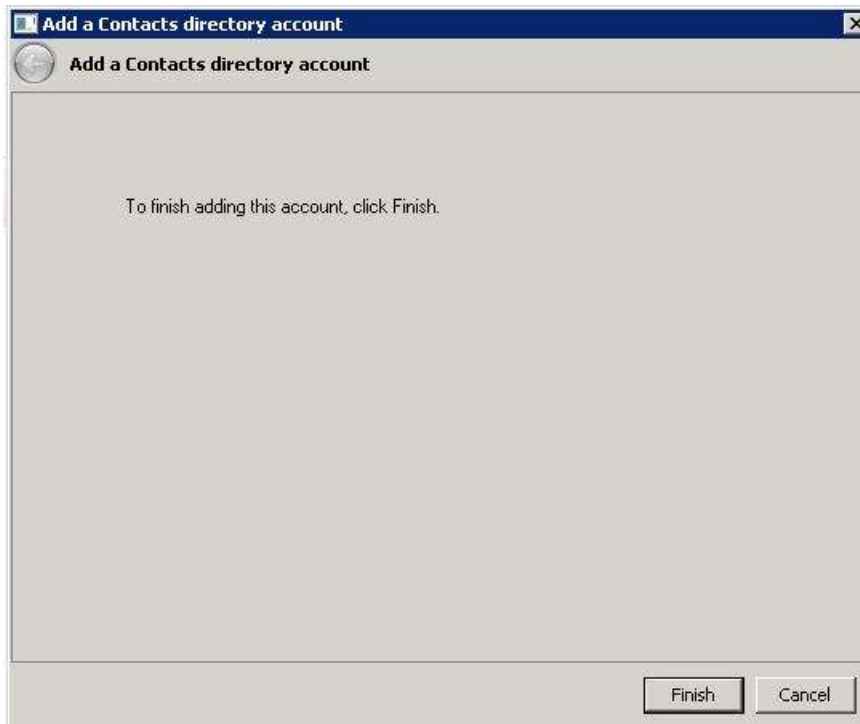
Do you want Mail to automatically check for addresses in this contact directory when you send email?

Automatically check addresses in this contact directory

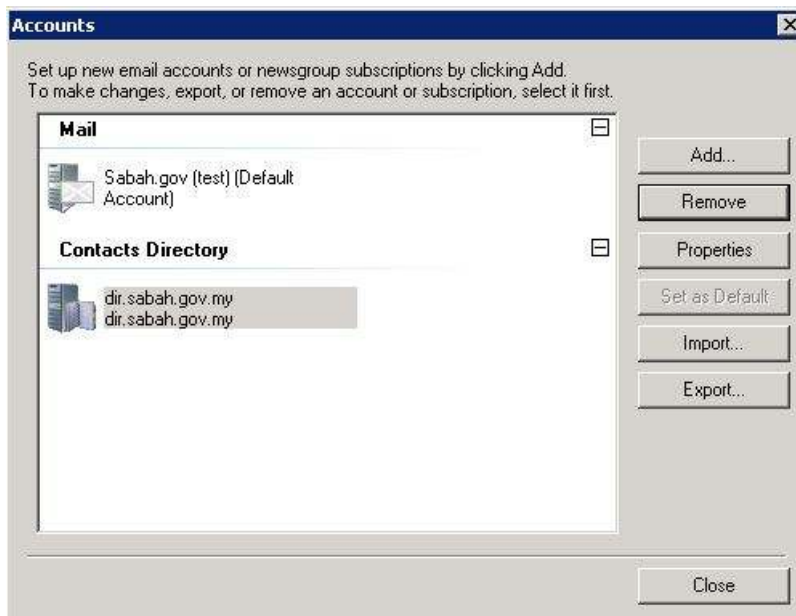
Use for manual address checks only

Next Cancel

8. Finish



9. After finish, On Contact Directory select **dir.sabah.gov.my** and click **Properties**



10. On dir.sabah.gov.my **Properties** click **Advanced** tab
In the Search base field enter : **DC=sabah,DC=gov,DC=my**

